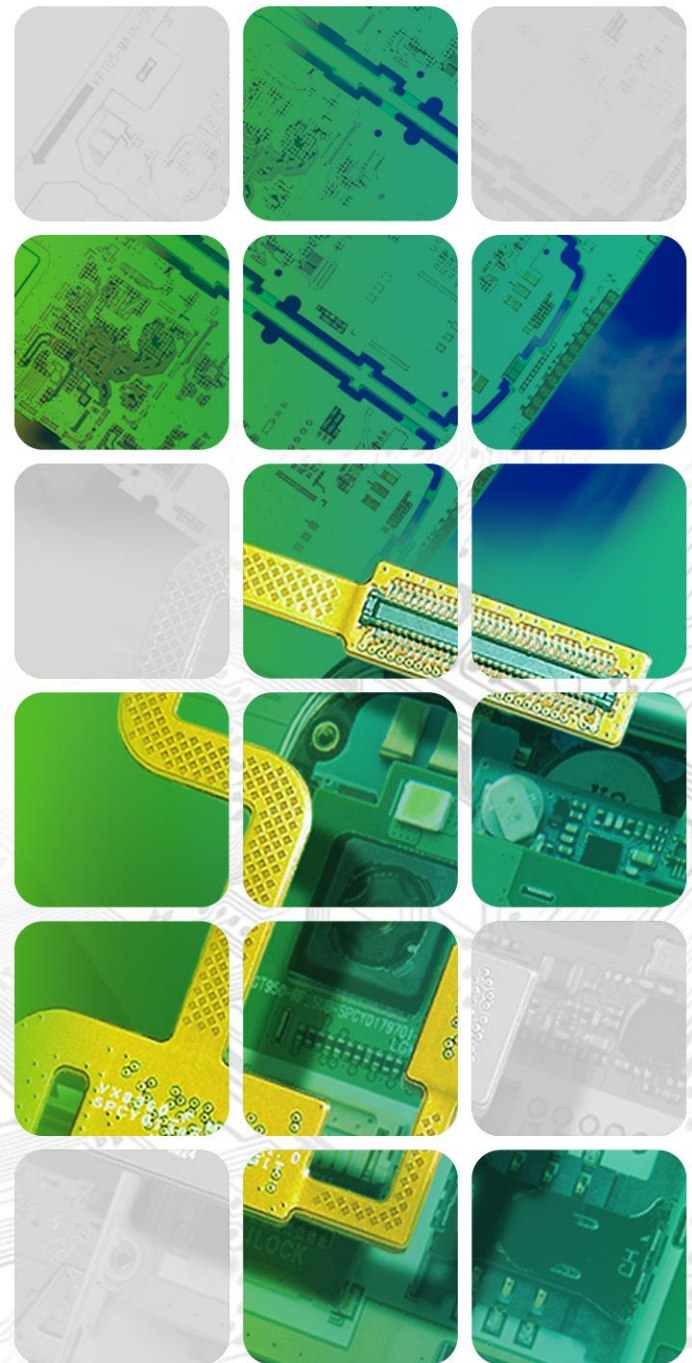
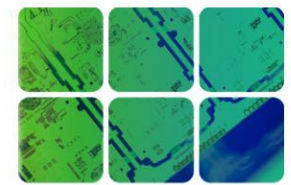


# Interflex

INTERFLEX is another technology invisible  
in technology visible



■ Feb. 2022



## 회사 연혁

2021. 03

- 신일운 대표이사 취임

2015. 01

- 무역의 날 3억불 수출의 탑 수상

2014. 07

- 베트남공장(Interflex Vina) 설립

2013. 12

- 매출 9,911억원 달성

2012. 04

- 신공장 Smart Center 준공

2011. 12

- (주)영풍 전자계열사 5개사 통합 CI교체

2005. 05

- (주)영풍 계열 회사로 편입

2003. 01

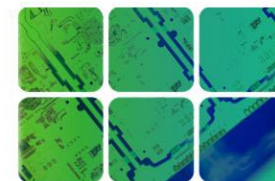
- 코스닥 증권시장 상장

2000. 05~12

- ISO9002 획득, 국내최초 Rigid-Flex 양산, (주) 인터플렉스 상호변경

1994. 07

- 법인설립(다성전자)

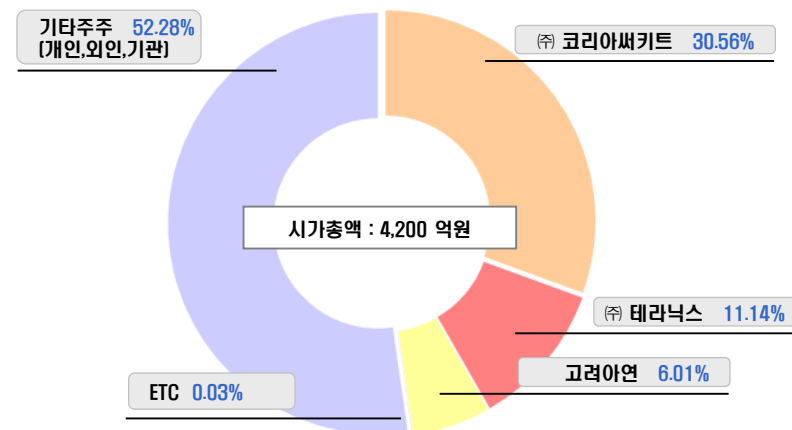


## GLOBAL Top Tier 연성회로기판 (FPCB) 제조기업

### 기업개요

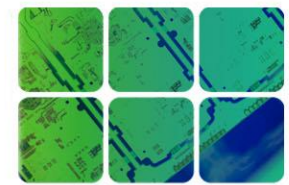
설 립 일 자	1994년 07월 20일
납입자본금	116억 6천만원
발행주식수	23,327,472 주 (보통주)
주 권 상 장	2003년 01월 22일 (051370 KS)
임 직 원 수	536 명
위 치	- 경기도 안산시 단원구 강촌로 149 (본사) - 경기도 안산시 단원구 강촌로 139번길 10 (통합사무동)

### 지분구조 : (주)영풍 계열



주요 주주	주식수	지분율	비고
(주)코리아씨키트	7,129,427	30.56 %	007810 KS
(주)테라닉스	2,599,246	11.14 %	
고려아연	1,402,343	6.01%	010130 KS
ETC	5,496	0.03%	
합 계	11,136,512	47.74%	

# | 사업장 및 생산현황



## (Viet Nam Plant – Vina Circuit)

- Floor Space: 13,535㎡  
Land: 30,023㎡
- Capacity : 90,000 Square meter
- Products : FPCB Part of the Process, SMT



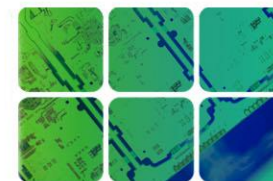
## (China Plant – China Circuit Tainjin)

- Floor Space: 13,070㎡  
Land: 27,000㎡
- Capacity : 60,000 Square meter
- Products : S/S, D/S, Multi FPCB



## (Smart Center)

- Floor Space: 14,496㎡  
Land: 26,126㎡
- Capacity : 145,000 Square meter
- Products : S/S, D/S, Multi FPCB & R/F PCB



## MOBILE / DEVICE



## DISPLAY / OLED



Interflex



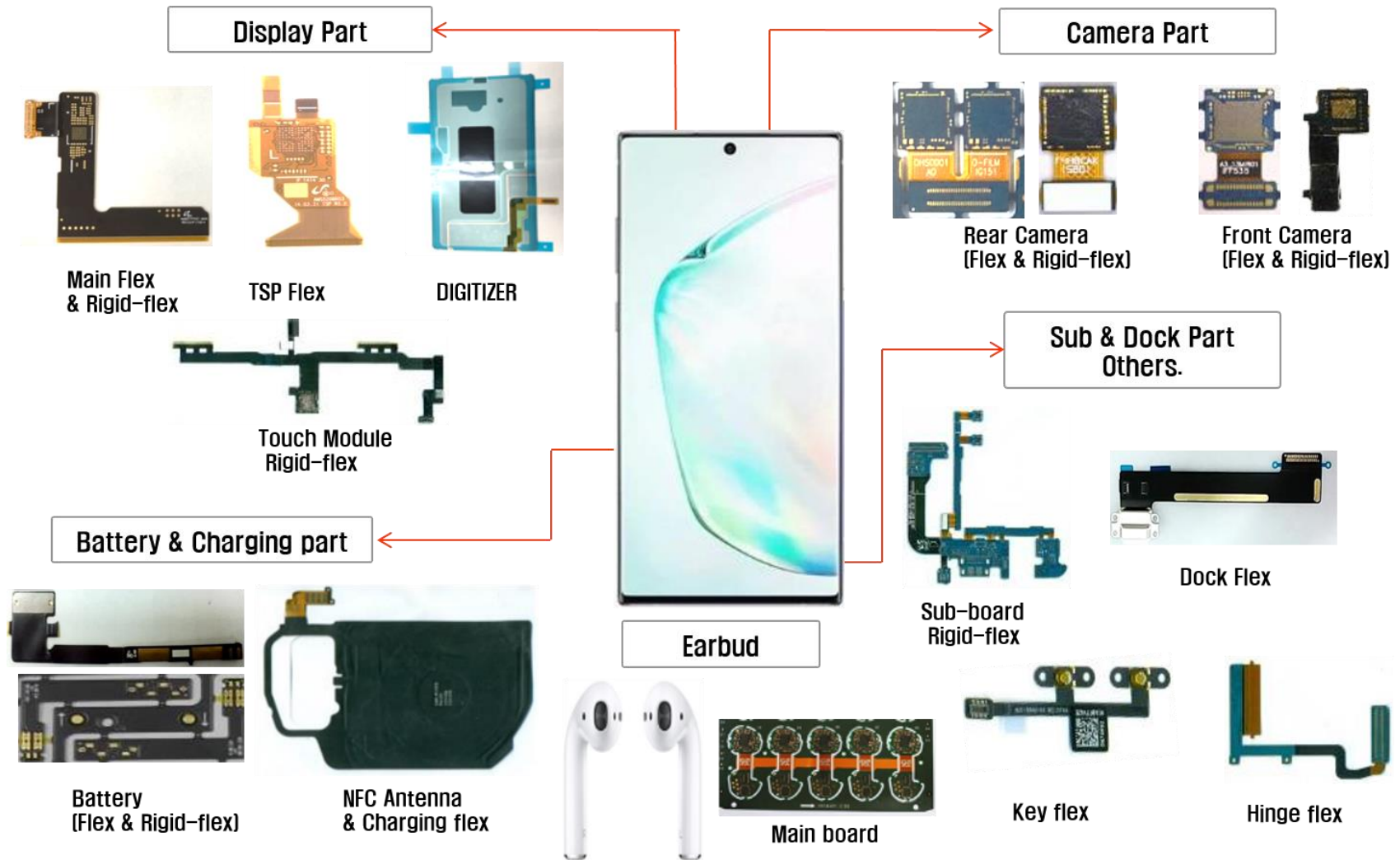
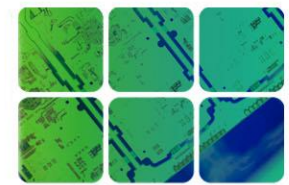
## CAMERA



## AUTOMOTIVE

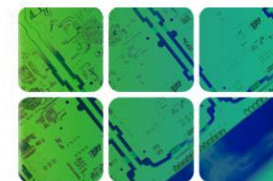


# 생산 제품군 (MOBILE)



Interflex' FPC & Rigid-flex are being used for all parts of smart devices

# | 생산 제품군 (AUTOMOTIVE)



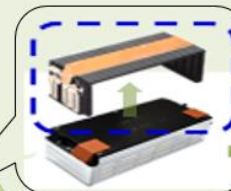
## INFORTAINMENT

- Layer : 2L~4L
- OLB TYPE (Fine Pattern)
- Pattern Gap 40/40 $\mu$ m



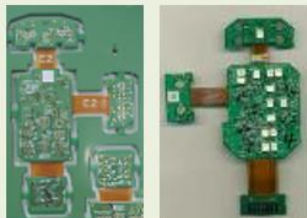
## Battery Module FPCB

- Layer : 1L (Dual Access) ~ 2L
- Battery Sensing, Pattern Fuse
- Materials : PEN , PI



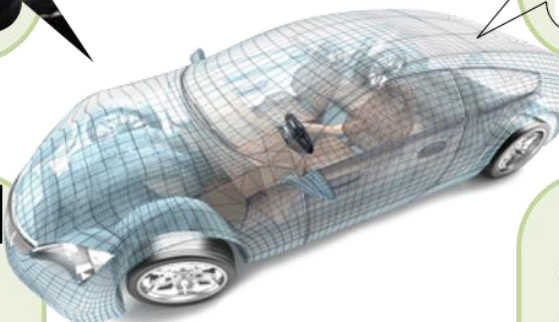
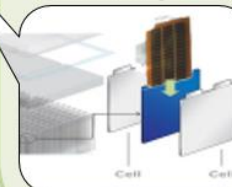
## ETRS KNOB FPCB

- Layer : 3L~6L
- Rigid-flex PCB
- Materials : FR4 + PI



## Heating Solution FPCB

- Layer : 1L~2L
- Heating solution (Max 250°C)
- Battery cell heating, Knee warmer, etc.



Porsche / BMW / HUNDAI / KIA – Supply for World' s mainstream brands

# Interflex

INTERFLEX is another technology invisible  
in technology visible



| 감사합니다.

